



# FRONTIER FLIMSY

The Quarterly Newsletter of the Niagara Frontier Region, NMRA

[www.nfr-nmra.org](http://www.nfr-nmra.org)

December 2009 Volume 55 No. 4



**The Niagara Frontier Region  
NMRA**

**Frontier Flimsy**

December 2009  
Volume 55 Number 4  
Stanley Conley, Editor  
2194 Valley Drive  
Ottawa, ON K1G 2P8

The **Frontier Flimsy** is published four times annually by the Niagara Frontier Region of the National Model Railroad Association, Inc. and is distributed on the web at [www.nfr-nmra.org](http://www.nfr-nmra.org) or by mail to NFR subscribers.

The Frontier Flimsy is available by subscription for NMRA members in good standing. The annual rate for a downloadable, colour PDF is currently \$10.00, a black and white printed version delivered by standard mail is \$12.00. All rates are assessed in the currency of your residence. Send fees as cheque or money order, to the NFR Registrar.

Material for publication is welcome. Send articles, coming events, notices, etc. to the editor. Materials including photographs may be submitted by e-mail. Materials will be credited at the time of publication and will be returned if requested. Articles appearing in the Frontier Flimsy may be reprinted in other non-profit publications providing that credit is given to the author and the Flimsy.

Advertising is accepted in the flimsy; please see the region web site for information and rates.

Opinions expressed in the Frontier Flimsy are those of the writer and do not necessarily reflect those of the NMRA, the Region, its officers, or other contributors to the Frontier Flimsy.

Special thanks to Diane Dodds for proofreading and nitpicking.

Printing and postal distribution is coordinated by Fran Phillips.

Printed in Canada

The Niagara Frontier Region Flimsy  
2194 Valley Drive, Ottawa, ON K1G 2P8

**The Niagara Frontier Region  
Regional Officers**

<b>President</b>	<b>Richard Roth</b> PO Box 309, Waterford, Pa. 16441-0309 814-796-0133, <a href="mailto:rrconductor@verizon.net">rrconductor@verizon.net</a>
<b>Canadian V.P.</b>	<b>Richard Hatton</b> 1965 Snowvalley Road, Minesing ON L0L 1Y0 705-737-9363 <a href="mailto:ricks.workshop@sympatico.ca">ricks.workshop@sympatico.ca</a>
<b>American V.P.</b>	<b>Bill Estes</b> 96 Eastwood Trl, Rochester NY 14622-1846 <a href="mailto:nyowrr@frontiernet.net">nyowrr@frontiernet.net</a>
<b>Secretary</b>	<b>Les Kauffeldt</b> 57 Bassett Blvd. Whitby ON L1N 8N5 905-666-8344, <a href="mailto:secretary@nfr-nmra.org">secretary@nfr-nmra.org</a>
<b>Treasurer</b>	<b>Bryce Stewart</b> 310 Fairwood Dr. unit 100, Brantford ON N3R 2X4 519-442-0440, <a href="mailto:brymia@uniserve.com">brymia@uniserve.com</a>
<b>Past President</b>	<b>Neville Meads</b> 26 Russell Hill Road, RR #1 Bobcaygeon, ON 705-731-0893 <a href="mailto:neville.meads@sympatico.ca">neville.meads@sympatico.ca</a>

**Division Superintendents**

**Allegheny** inactive  
**Central Ontario:** Robert Douglas, 613-962-0462, [robert249.douglas@sympatico.ca](mailto:robert249.douglas@sympatico.ca)  
**International:** Harvey McIntyre, 905-643-8420, [hmcintyre4@cogeco.ca](mailto:hmcintyre4@cogeco.ca)  
**Lakeshores:** Raymond Howard, 315-789-4801, [superintendent@lsdmra.org](mailto:superintendent@lsdmra.org)  
**Ontario Northland:** Trevor Ross, 705-983-9602, [trevor@tjrcadd.com](mailto:trevor@tjrcadd.com)  
**St. Lawrence:** Peter Joyce, 613-841-1950, [galeandpeter.joyce@sympatico.ca](mailto:galeandpeter.joyce@sympatico.ca)  
**Southern Tier:** Robert Hamilton, 607-754-0089, [bobhamilton@stny.rr.com](mailto:bobhamilton@stny.rr.com)  
**Western Ontario:** John Moseley, 519-455-1311 [j.moseley@sympatico.com](mailto:j.moseley@sympatico.com)

**Regional Officials**

**Achievement Program:** Peter Nesbitt, 613-253-8469, [nesbitt@magma.ca](mailto:nesbitt@magma.ca)  
**Convention Coordination:** Vacant Your name could be here!  
**Flimsy Editor:** Stanley Conley, 613-523-8237, [stanley\\_conley@carleton.ca](mailto:stanley_conley@carleton.ca)  
**Historian:** Keith Lebold, 705-653-4902, [k\\_lebold@yahoo.ca](mailto:k_lebold@yahoo.ca)  
**Membership/Registrar:** Clair Rutter, 613-392-0601  
**Model Contest:** John Moseley, [j.moseley@sympatico.com](mailto:j.moseley@sympatico.com)  
**WebMaster:** Bill Annand, [bill\\_annand@muskokacomputes.com](mailto:bill_annand@muskokacomputes.com), [webmaster@nfr-nmra.org](mailto:webmaster@nfr-nmra.org)

**Waybill**

<b>Executive Reports</b>	<b>Page 3</b>
<b>Division Reports</b>	<b>Page 5</b>
<b>Officer Reports</b>	<b>Page 6</b>
<b>Model Railroad Month Part1 of 2 by Dick Roth</b>	<b>Page 9</b>
<b>Famous Model Railroaders: Real and Fictional</b>	
<b>By Bill Annand</b>	<b>Page 12</b>
<b>Regional Train Orders</b>	<b>Page 13</b>

# Editors Note

It is with some apology that I report that this issue of the Frontier Flimsy has been unusually delayed. There was a small delay to allow for material from the Executive meeting in late November to be incorporated into this document. However the bulk of the delay was the direct result of 'feeling poorly' November 26-30 which finally resulted in a diagnosis of a perforated appendix and resultant immediate surgery and more doses of antibiotics than I have accumulated in my life, four days in hospital and so far lots of rest at home. We are on our way back to normal thankfully!

## Niagara Frontier Region Executive Reports

### President Richard Roth

With this issue I'm going to begin reporting very briefly on the business and discussions that take place at the Region Business Meetings. This report addresses the meeting held at the Toronto Christmas Train Show on November 21<sup>st</sup>.

#### Old Business –

1.) Several meetings ago we discussed and set prices for Ads for the Frontier Flimsy and the Web Site. Selection of an Advertising Manager was discussed, but nothing was done at that time. At the meeting yesterday, we voted to open the search for said position. The primary duties will be to sell and invoice for the advertising, and to serve at the point of focus for all ads, business, pike, and member. To encourage people to step forward and consider the position, it was decided that a commission of 10% of fees collected would be returned to the Advertising Manager. Anyone wishing to be considered for this position is asked to send an e-mail with a brief summary of qualifications to the President as soon as possible.

#### New Business –

1.) The appointments of the American Vice President, and the Committee Chairs were put forward and approved by the Board. They include:

American Vice President – Bill Estes  
Achievement Program – Peter Nesbitt  
Flimsy Editor – Stan Conley  
Flimsy Distributor – Fran Philips  
Historian – Keith Lebold  
Registrar – Clair Rutter  
Web Master – Will Annand

2.) Our two Region Vice Presidents are working on a new member packet to be provided to all new members. This packet will include a welcoming letter along with a CD and other information. Anyone with suggestions is asked to contact your respective Vice President and make them known. If you would like to assist by contributing clinics, articles, pictures or other material, please let them know.

3.) It was announced that the NFR recently received a payment from the ML2003 Committee. The funds were earmarked to shore up the NFR Life Member Account. Because of the receipt of the funds, NFR Life Members will continue to receive their choice of either the hard copy (black & white) or Web based copy (color) of the Flimsy. We are asking the NFR Life Members to contact the NFR Registrar to voice their preference for the form they desire.

As an adjunct to the above, our Treasurer, Bryce Stewart, suggested that we investigate safe means of investing the funds along with some of the other Region money that will earn some reasonable return on our investment. Bryce will report back to the Executive who will then make a decision.

4.) It is with a bit of sadness that I report that we will not hold a Region Convention in 2010 as we have had nobody, individual or group, to come forward to host the event. In the next couple months the Board will discuss an alternative event at which we will hold the Annual General Meeting. Several ideas are being floated at this time. If any member has an idea, a suggested location, or other related ideas, they are asked to contact the President or Vice Presidents and make their ideas known.

5.) Very recently it was announced that NMRA membership will not be required for the upcoming

National Convention, the Association's 75<sup>th</sup>. Based on this announcement, we and others are asking if that requirement is being waived only for 2010, or if it is to be an ongoing policy. We, the NFR have sent a request to National for clarification as to whether it will also apply to Regional Conventions.

6.) For sometime now, various NFR officers and officials have been concerned that we are not properly serving our members. Much of this has become leading issues since the U.S. Customs' regulations went into affect requiring passports to cross into or back into the U.S. after visiting Canada. This issue has moved from a point of discussion to probably the single most important issue we are facing.

Clark Kooning, the Canadian Director for NMRA Canada, joined our meeting and commented that the National Board is currently considering several possible solutions. He said there are no fixed programs in place yet and there are no timelines yet established, but some of the solutions being considered are very significant. We will keep you informed on this matter.

At this time we see no easy solutions, but we are all searching intensely for one. Our Divisions too have felt the pinch and are also actively searching for ways to accomplish the same ends. Harvey McIntyre, Superintendent of the International Division asked for assistance for his Division and several others jumped in at once to ask for the same. I told Harvey that I would include a notice in this issue of the Flimsy to that end. See a brief notice elsewhere in the Flimsy.

7.) The last, but not least important issue presented at the meeting was the resignation submitted by COD Superintendent, Bob Douglas. Health issues in his family necessitated his resignation. I would ask that everyone keep Bob and his family in their thoughts and prayers and wish him a speedy return to active participation.

**American Vice President  
Bill Estes**

**Canadian Vice President  
Richard Hatton**

### **Modellers Corner Takes Milwaukee**

Once again Al Crisp organized a band of desperados and headed to Trainfest in Milwaukee. 16 strong and out to defend our title. Once again this Band of modelers worked diligently answering questions and helping where we can. The results, once again we received the Chairman's award. A great time was had by all. Layout tours, a tour of Kalmbach and topped off with an operating session. What a weekend. In only 2 shows we have become a featured attraction at Trainfest. We had people that were at the show last year looking for us. We all enjoyed the positive comments from the crowd and other participants

Lee and Gloria Bauer from Racine joined us for the weekend and were a great addition to our team. Thank you Al and the 16 members for allowing me to join in the fun. It has been said that one of the best things that the NMRA has to offer is the friendships and fellowships we develop along the way. This weekend proved it and that it has no borders.

Looking forward to next year and making it #3.

Al looks like you will need more wall space.

### **Back at the Ranch**

Since the last issue Modellers Corner has been to Tottenham, Brampton, Bowmanville, Bracebridge, Kitchener, Woodstock, London and St Thomas. Thanks to all of the participants, far too many to mention.

Our organization relies on its volunteers to make positive impressions on others. The members at Modelers Corner are 2<sup>nd</sup> to none. I thank you as it makes the Hobby fun.

Want to join the fun send me an email I will add you to the list. There is no better seat in the hobby than the one at Modellers Corner.

### **Seasons Greeting**

The Holiday Season is closing in quickly. I would like to thank all the Members of the NFR for a great year of Modeling and time shared together. I wish you and yours the best of what this time has to offer, friends and family. Merry Christmas to all and a Happy New Year too.

# Niagara Frontier Region Division Reports

**Central Ontario Division**  
**Superintendent Bob Douglas**

**International Division**  
**Superintendent Harvey McIntyre**

**Lakeshores Division**  
**Superintendent Raymond Howard**

The Lakeshores Division put on a Modeler's Corner at the Batavia Train Show on Sunday, November 15.

The Lakeshores Division Fall Meet will be held at the RIT Model Railroad Tiger Tracks Train Show. This will be an open meet with the public invited to advertise the Division and our activities. Two Clinics will be given and materials will be given out explaining who we are and what we do. The Meet will be on Saturday, Dec. 5, from 11:00AM to 12:30 PM. The division will also have a Modeler's Corner at the RIT Train Show on both Dec. 5 and 6.

The Lakeshores Division will also hold a joint meet with the Central New York Division in Auburn, NY on Sunday January 10<sup>th</sup> from 2 to 4 PM.

We are still looking for members to fill the positions of Assistant Superintendent and Secretary.

**Ontario Northland Division**  
**Superintendent Trevor Ross**

**St. Lawrence Division**  
**Superintendent Peter Joyce**

Greetings once again!

Our outing to Morrisburg went well, with a very healthy attendance. Thanks to Paul Bullock for opening his layout to the group.

On October the 24<sup>th</sup> nearly 25 of us met at Emmanuel United Church for the first 09/10 session of "kitbuilders". It was a busy day, with two great clinics on preparing and painting plaster kits provided by Grant Knowles and Chris Lyon. Grant spoke to the art of painting (or is "staining" the more correct term) of the

raw castings. Chris then took over and shared with us numerous techniques he had learned at the Structures Convention that bring a plain model to life. In this case, Chris pre primed his castings with an acrylic sealer that reduced the porosity of the castings so that they behaved more like a hard surface when applying paints. From there he demonstrated the use of various colouring agents and sequences to arrive at different finishes. A highlight was when he made a plaster casting look like real rusted old galvanized roofing! All the details covered in the clinics will be posted on the SLD web site in the near future. The real value of these techniques is that they are transportable to any model surface - not limited to just plaster. I was late for the clinics, so was given an extensive one-on-one tutorial by Chris which simply made my day. We have so much talent within our group that it hurts!

The suggestion has been made by Regional HQ that for every new member we enlist we should provide a mentor from within our ranks – someone that could be phoned to answer questions or point the new member to a learned source. I've not received much response from the membership on this idea, but I feel that its something we will endorse wholeheartedly. Time will tell of course – when we see "new faces".

November 28<sup>th</sup> is our next regular meeting. Hopefully Bob Farquhar will have his clinic on "Waterfalls" ready for presentation, and there will be layouts to visit in the afternoon.

Our featured presentation for "show and tell" in November is "non revenue", but as usual bring out whatever you want to show off!

**Southern Tier Division**  
**Robert Hamilton**

**Western Ontario Division**  
**Superintendent John Moseley**

WOD Mentoring group's first workshop on Scratch building a Cinder Car was held this October, with a follow up workshop to be held early in the next year. If you want to join us, just emailed Tom Jerrard or myself, and we will gladly save a place for you.

Due to a conflict for the Track Planning Software clinic in Chatham, it had to be cancelled. A Beginner's Clinic, has been set up for Feb 20, 2010, in Ingersoll.

The "Welcome Table" has had a busy time this year, and it seems that others would like it to go to their shows. New shows added for the "Welcome Table", were Tottenham, and London.

It looks like the Paris Train Show will be full again as our regular vendors, plus a few extras all are planning on going. If you want to go yourselves and have never been, the date is Jan 17, 2010, held at the Paris

Fairgrounds. Remember to bring your NMRA Card, or you'll have to pay full price.

Finally, I would like to say congratulations to Graham MacDonald, and John Kanakos for completing certain categories in the Achievement program. Graham finished his Scenery, Civil and Structures Categories, while John received his Dispatchers. Way to go guys.

Remember to come to the Welcome table at any of the shows this fall, or even during the spring, and talk to us. Never hurt to hear from the members.

## Niagara Frontier Region Officer Reports

### Historian

#### Keith Lebold

I have been going through the archives as my time permits and I will continue to do so.

I am receiving a copy of the Flimsy for the Archives.

I have not been receiving newsletters from any of the Divisions, if any of the Divisions would like a copy of their newsletters included in the archives, they can forward them to me attached to an e-mail.

As this is the last report for 2009, we would like to send greetings to all members, "From Our House to Yours Happy Holiday and a Prosperous New Year".

### Achievement Program Chairman

#### Peter Nesbitt

I'm pleased to report since the convention the following Achievement Program Certificates have been approved.

John Kanakos	Dispatcher
Edward Spiller	Author
Peter Nesbitt	Cars

As well Gordon McIntyre and Richard Sparrow have started down the Achievement Program path by receiving their Golden Spike awards.

Congratulations on your fine accomplishments.

In September, my wife and I had a combined trip down to south western Ontario; a little bit of pleasure and some AP judging which by the way is also a pleasure. John Moseley and Chuck Faist joined me at Graham MacDonald's for judging his fine layout. I was also at Ron Colpitts', Allan Crisp's, and John Brown's for some judging and train running as well!

The fun part started at Ron Colpitts' where I was joined by John Brown. After judging the indoor railway items (N and HO scale) for "Civil" we headed outside to run some of the larger trains in the backyard. This was followed by a delicious Bar-BQ.

After dinner we headed to Al Crisp's. Here we got to enjoy his layout and judge some of Ron's trackwork that is part of Al's layout. We also reviewed Al's paperwork for his "Dispatcher" and "Master Model Railroader" AP certificates.

A lot of fun and some nice food and hospitality served up the various hosts.

The next morning I met Ron and we drove to John Brown's. Here we did some judging for John's "Civil" and "Scenery" certificates. Then it was outdoors to check out some of John's collection of Speeders. Following a nice lunch my wife picked me up and it was off to Brantford.

After a relaxing dinner I headed off to Graham MacDonald's where I was joined by John Moseley and Chuck Faist. Coffee and cookies compliments of Graham's wife, then down to the basement for some more work. Graham needed one last building judged to complete the requirements for "Structures".

He also wanted us to do the required judging and verification for “Civil”. After completing that and taking a look at his fine layout we decided that we should go over it more closely and do the required judging for Graham’s “Scenery” certificate. The paperwork could come later but let’s get the judging done when we’re there.

The next day we were scheduled to visit one of my wife’s aunts but had to cancel that visit because of health issues. This did free up a day to site see and enjoy the hotel’s hot tub/whirlpool.

Last stop was in Gananoque to enjoy a play at the Thousand Island Playhouse.

I am pleased to say that the judging went very well and I should be able to report on a number of certificates in the near future. Final approval from National is still pending.

Peter Nesbitt  
AP Chairman

**Convention Coordinator  
Open**

### **Your help is needed**

Harvey McIntyre, Superintendent of the ID, has asked for assistance of the Flimsy to reach as many of our NFR members in his Division as possible. He is asking for members input as to what they would like to see as topics for future meets. This can be for the meets in general, clinics, locations for the meets, clinics or clinicians, prototype and layout tours, contests, and anything else that could serve as program material.

Along with that he has asked what can be done by the Division to better serve the U.S. resident members. What can be done to encourage them to participate more fully?

Since the two questions above are so important to our Region and several of our Divisions, I would encourage every member of the Region to take time to consider the questions with respect to your Divisions and get back to your respective Superintendents for future programs.

Thank you all.

### **Want Ad**

Wanted to buy at a reasonable price, HO Vintage Pennsylvania RPO Car # 462, Rivarossi Item # 288.

Recently, the Oil Creek and Titusville Railroad, the Oil Creek Historical Society arm that sponsors the passenger excursions at Titusville, donated models of an Alco S-2, 4 coaches decorates as our coaches along with an vintage reefer converted to an open car to the ExpERIEence Erie Children's Museum at Erie, PA. To complete their train, we are looking for a reasonably close model of our RPO car # 66 pictured here.

We are willing to pay a reasonable price for one of the cars. Anyone with one of the models they are willing to sell or information as to where we may purchase one is asked to e-mail information to, Dick Roth, at <rrconductor@verizon.net> or phone at 814-796-0133.



October 2009

**NFR Membership Type by Years Renewed**

Membership Type	Total	1 YR	2 Yr	3 Yr	4 Yr	5 Yr	6 mth	Life
Family	36	17	18		1			
Life Member	117							117
Life Member Actuarial	49							49
Member	167	109	56			2		
Member w/ subscription	443	296	136			11		
Rail Pass	25						25	
Student								
Sustaining	5	5						
<b>Total</b>	<b>842</b>	<b>427</b>	<b>210</b>		<b>1</b>	<b>13</b>	<b>25</b>	<b>166</b>

Membership Type	Total	AHD	COD	ID	LSD	OND	SLD	STD	WOD
Family	36		8	6	2	3	4	3	10
Life Member	121	2	24	22	23	7	15	6	22
Life Member Actuarial	30	4	4	10	6	1		1	4
Member	159	3	29	33	6	2	27	8	52
Member w/ subscription	443	20	109	81	44	12	61	24	92
Rail Pass	25		6	3	2		1		13
Sustaining	5		1	2			1		1
<b>Total</b>	<b>819</b>	<b>29</b>	<b>180</b>	<b>157</b>	<b>83</b>	<b>25</b>	<b>109</b>	<b>42</b>	<b>194</b>

Div Des	NFR Division Membership by Expire Year					
	Total	2009	2010	2011	2012	2009
OOD	23	1	7			15
AHD	29	4	17	2		6
COD	180	20	100	30	2	28
ID	157	17	81	26	1	32
LSD	83	5	48	1		29
OND	25	2	10	5		8
SLD	109	14	66	14		15
STD	42	6	28	1		7
WOD	194	19	122	27		26
<b>Total</b>	<b>842</b>	<b>88</b>	<b>479</b>	<b>106</b>	<b>3</b>	<b>166</b>

# Model Railroad Month – Part 1 of 2

By Dick Roth

The NMRA proclaims Model Railroad Month to be November each year. They encourage special events to highlight the hobby both for members and the general public. The Regions, Divisions, Clubs, or individuals can sponsor the events. It's a fine way to of showing off the hobby and an even better way of interesting others in our hobby as well.

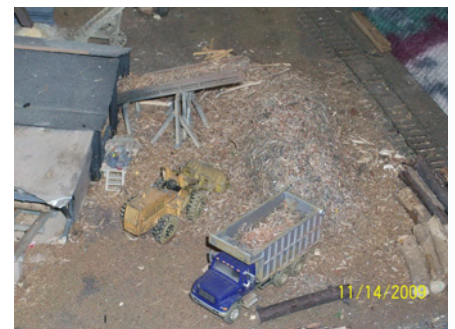
A couple weeks ago, I received a notice from one of the modelers in the Jamestown, NY area announcing their Model Railroad Month layouts open house. I thought about it several times then, on the day decided to check them out.

In the Jamestown area, 5 modelers participated, 4 HO scale layouts and the other a 3-rail O scale. It would be unfair to judge or rank them in any way. To that end, I will only say that they ranged from pristine looking like new to the far opposite end of the spectrum. All 5 were built with operation in mind with 4 of them sized to provide work for multiple train crews at any given time. The other was a small shelf-top layout with the attention to detail far beyond what is usually seen.

By far the smallest layout was that of Dave Shaw of Lakewood. This layout was a real gem. Dave has always been an advocate of weathering and high density detailing, offering clinics at and around the AHD when it was still active. He is the great at it in my books. He is a self-professed master of dirt and grim, and it was featured on his previous layout and almost seems to be rule on the new one. The old layout was housed in what maybe best be described as a chicken coop. The new one, based on a prototype that probably exists only in Dave's mind, sits on shelves along two walls above a bed in a small cabin, a single track main with sidings meanders in and out of view behind a canyon of tall buildings. It offers plenty of action for any modeler. I doubt if this railroad will ever go DCC for it's perfectly fit to standard DC.



Separate from the main layout is a diorama of a small lumber mill. The detail on it too is almost indescribable, needing to be seen to be believed. When we saw it, Dave had it resting on the bed with a mirror positioned behind it. This provided the opportune setting to be able see and enjoy the majority of it. It is a mix of various kit bashings and commercially available vehicles and accessories.



I've included two close-up photos of the mill as well to show a bit of that detail. The first is of the front, the output end with the piles of individually stacked lumber. To the right side is the scrap discharge chute and the refuse piles. A front end loader is loading some of it on a truck. I doubt they would ever haul away all the refuse. It just wouldn't be a Dave Shaw layout, it would be too clean. I've always had a great deal of respect and a bit of envy for his modeling abilities. There is not a single corner of any of his layouts that couldn't be described as full of interest. His ability to rationalize what is missing and add it is unreal. This was reflected on one of the buildings in the layout. A part of the roof was broken or missing when he decided to incorporate the building into the layout. He added a dissimilar panel, some different texture and color, a crew of roofer. And a few spectators, and the scene became completely plausible.



The 3-rail O scale layout on the tour was designed and built by the owner, Bob Yerkey of Mayville, NY. It occupies the 2<sup>nd</sup> story of a large garage. Tracks twist and turn providing continuous operation. It allows visitors to follow individual trains and enjoy the changing landscape or concentrate on one particular area watching train after train pass by much as a railfan would see. The “super O” style track encompasses the whole 2<sup>nd</sup> floor at a comfortable viewing height. There are some changes to the elevation to allow for some grade change as would be encountered in real-life. This layout models the Pennsy from Erie to Renova, PA in the 1950’s.



The layout is DCC with most if not all of the locomotives sound equipped. The railroad looks like the dream of any railroad tycoon with every piece of the equipment looking fresh from the wash bays. The environment is bright and cheery making viewing very



easy. With portions of the layout running along the walls and then forming fingers extending out into the room, it was designed with easy access in mind as there are no tight walkways or duck-under.



It could be clearly seen that the layout was designed for operation and switching in addition to continuous operation. I’ve seen many Hi-rail layouts over the years. I was very impressed with the way Bob operated his trains. Trains were running at very reasonable speeds on track that was well laid. Unlike most 3-rail layouts, the sound of the locomotives was not drowned out by the clickity-clack of a noisy roadbed. What a treat.



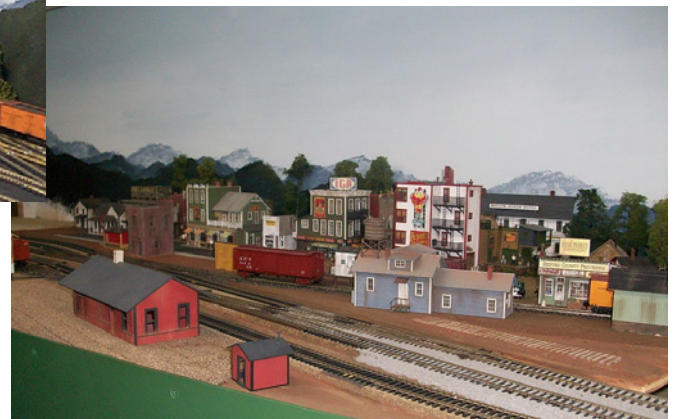
The B&O layout of John and Judy Fiero at Ashville, NY is a layout that occupies a basement, but no typical basement layout with bare bulbs hanging from the ceiling. This one is complete with indirect lighting as well as recessed ceiling lighting.



The railroad twists and turns around their basement, but with a major difference. The basement is divided into major scenes, each occupying a small room. For most, the rail lines

run alone 2 or 3 of the walls disappearing through portals in walls to carry the trains to the next room.

This layout is currently operated using Dynatrol, but shortly will be converted over to DCC. Years ago, Judy gave several clinics at the AHD on backdrops. The photos clearly show her skills in this regard.



Dave and Judy modeled the B&O from Cumberland Maryland to Connellsville Pennsylvania. They dedicated special interest to the Rockwood Pennsylvania area. Like most of the other layouts in the Jamestown, NY area, this layout was built with operation in mind. Notice the fascias with detailed track diagrams and switch controls lined out. Staging yards are on a lower level below the main track. Several of the rooms have trains completing loops under the main layout level to provide the returns for continuous running mode.



The next time I'll report on the other 2 layouts we saw, the freelanced Chadakoin Valley Railroad of Dave Eggleston and the Erie layout of Dave Cole. Both have been rebuilt in the last couple years. Both are coming along well.

Division Six of the  
NCR- North Central Region of the  
NMRA- National Model Railroad Association presents-



# NORTH CENTRAL EXPRESS 2010



<http://div6-ncr-nmra.com>

**THURSDAY - FRIDAY - SATURDAY - SUNDAY  
OCTOBER 21-22-23-24, 2010  
LIVONIA, MICHIGAN, USA**

**WELCOME** to the NCR Model Railroad Convention, *NORTH CENTRAL EXPRESS 2010!* The convention is being hosted by DIVISION SIX, located in the western Detroit metro area. We are planning a great weekend of model and prototype railroading, just for YOU!

## **EVENT HIGHLIGHTS INCLUDE-**

- \* Operation sessions available Thursday, Friday, Saturday
- \* **FREE** bag of model railroad "stuff" first 200 registered
- \* Extra Best in Show and Participants Choice Contest Awards
- \* All-you-can-eat Pancake Breakfast on Sunday morning
- \* Keynote speaker, Art Fahie of Bar Mills Products on Sunday morning
- \* **15+** Workshops on Friday and Saturday
- \* Prototype tours available on Friday
- \* NMRA Model and Photo contests
- \* Limited special event shirts on sale
- \* Online Registration available, see website!
- \* **EVERYONE** welcome to attend!
- \* Special event HO & N scale billboards on sale
- \* **20+** model layouts to visit
- \* Door Prizes awarded Friday and Saturday
- \* Silent Auction Fund-Raisers!
- \* Special DAY PASS entry available!
- \* Event site- Livonia Marriott, Laurel Park Mall

For more information or questions answered, contact - Barry Hensel 734-397-5182 (5pm-10pm) email- [barry76Lt@wowway.com](mailto:barry76Lt@wowway.com), OR Glenn Joppich 734-464-6004 (5pm-10pm) email- [steambigot@yahoo.com](mailto:steambigot@yahoo.com) and visit our web pages at- [www.div6-ncr-nmra.com](http://www.div6-ncr-nmra.com)

# Famous Model Railroaders: Real and Fictional

By Bill Annand

As model railroaders we are in with some fine company. While researching a presentation on model railroading, I happened on some interesting discoveries. Below is a list of famous people who are model railroaders just like you and me;

Tim Allen (comedian)	Ward Kimball (one of Disney's original nine animators and a Disneyland designer)
Gene Autry ("The Singing Cowboy")	Christopher Lee (actor "Dracula")
Roseanne Barr (actor)	Jay Leno (TV talk show host)
Tom Brokaw (newscaster)	Jack Lord (actor "Hawaii Five-O")
Yul Brynner (actor "The King and I")	Roger Miller (country singer)
Johnny Cash (country music singer)	Mandy Patinkin (actor "Chicago Hope", "The Princess Bride")
Winston Churchill (former British Prime Minister)	John Pertwee (actor "Doctor Who")
Gary Coleman (N scale modeller and part owner of Caboose Hobbies in Denver, Colorado)	Sam Posey (American race car driver)
Phil Collins (rock singer)	Sally Jesse Raphael (TV talk show host)
Kevin Costner (actor)	Lionel Ritchie (singer)
Richard Crenna (actor)	Roy Rogers (actor)
Walter Cronkite (radio/TV personality)	David Rose (Musician)
Roger Daltry (lead singer of the Who/actor)	Rick Schroeder (actor "Silver Spoons", "NYPD Blue")
Joe DiMaggio (baseball player)	Frank Sinatra (Lionel and tinplate collector)
Walt Disney (producer)	Tom Snyder (newscaster)
James Doohan (actor "Star Trek")	Stephen Spielberg (director)
Erik Estrada ("CHiPs")	Bruce Springsteen (rock singer)
Harrison Ford ("Star Wars" & "Indiana Jones")	Jill St. John (actor "Diamonds Are Forever")
Arthur Godfrey (radio/TV personality)	Sylvester Stallone (actor "Rocky" "Rambo")
Whoopi Goldberg (actress)	Patrick Stewart (actor "Star Trek: The Next Generation")
Hermann Göering (rumoured to have had the largest Märklin model railway collection)	Rod Stewart (rock singer)
Michael Gross (the father on "Family Ties")	Donald Sutherland (actor)
Merle Haggard (country singer)	Mel Tormé (singer)
Tom Hanks (actor)	Pete Waterman (British record producer has largest private collection outside North America)
David Hasselhoff (actor "Bay watch")	Anders Wejryd (Archbishop of Church of Sweden)
Elton John (rock singer)	Neil Young (part owner of Lionel Trains)
Michael Jordan (basketball player)	
Bob Keeshan (Captain Kangaroo - kids' show host)	

## Fictional Model Railroaders:

Gomez Addams (The Addams Family) had a Lionel layout. He was noted for setting trains on a collision course, then blowing them up with explosives.

Donald Duck in the cartoon short "Not To Scale" has a garden railroad.

Reverend Timothy Lovejoy (The Simpsons) has been portrayed in several episodes running model trains in his basement.

John Patterson (For Better or For Worse) has a garden railroad.

Mr X & his arch-enemy Glowface {The X's} are model trains fanatics.

Bobby Baccalieri (The Sopranos) has a layout in his garage.

Mary Ellen Rogers (Wally's Girlfriend on Leave it to Beaver), her Dad has an American Flyer layout in their basement in one episode.

King Willem (Double Star). His love of model trains is a major plot point in the story.

## Regional Train Orders

December 5-6, 2009. Aberfoyle, Ontario. Aberfoyle Junction Model Railway open house. See October 17-18 above.

January 3, 2010. Woodstock, Ontario. The Woodstock Model Train Show and Sale. 10:00 am to 3:00 pm, in the Oxford Auditorium at the Woodstock Fairgrounds, at 875 Nellis Street. The Woodstock Model Train Show features over 120 tables of vendors selling Model Trains of all scales. Admission is \$4.00 per person; Children under age 12 will be admitted for Free when accompanied by an adult. Website: [www.woodstocktrainshow.blogspot.com](http://www.woodstocktrainshow.blogspot.com) email to IAN at [toyshow@kwic.com](mailto:toyshow@kwic.com) or call (519) 426-8875.

**January 17, 2010. Paris, Ontario. Paris Junction 2010 Model train show. Sponsored by WOD-NFR-NMRA. Paris Fairgrounds, Silver Street. 10:00am – 4:00pm. Admission; general \$4.00, WOD-NMRA member \$3.00, children under 10 free. Info: John Moseley 20 Graham Crescent, London Ontario N5W 4L8 Phone: 519-455-1311, email: [j.moseley@sympatico.ca](mailto:j.moseley@sympatico.ca)**

**January 9, 2010. Ottawa, Ontario. St Lawrence Division Workshop. Location St. Emmanuel United Church, Smyth Road Info: [www3.sympatico.ca/gd.knowles/sld/sld\\_meets.htm](http://www3.sympatico.ca/gd.knowles/sld/sld_meets.htm)**

**January 29, 2010. Ottawa, Ontario. St Lawrence Division Meet. St Emmanuel United Church, Smyth Road. Info: [www3.sympatico.ca/gd.knowles/sld/sld\\_meets.htm](http://www3.sympatico.ca/gd.knowles/sld/sld_meets.htm)**

**February 20, 2010. Ingersoll, Ontario. WOD Beginner's Clinic. Info: contact John Moseley email: [j.moseley@sympatico.ca](mailto:j.moseley@sympatico.ca)**

**February 27, 2010. Ottawa, Ontario. St Lawrence Division Workshop. Location St. Emmanuel United Church, Smyth Road Info: [www3.sympatico.ca/gd.knowles/sld/sld\\_meets.htm](http://www3.sympatico.ca/gd.knowles/sld/sld_meets.htm)**

**March 27, 2010. Ottawa, Ontario. St Lawrence Division Meet. St Emmanuel United Church, Smyth Road. Info: [www3.sympatico.ca/gd.knowles/sld/sld\\_meets.htm](http://www3.sympatico.ca/gd.knowles/sld/sld_meets.htm)**

**April 24, 2010. Ottawa, Ontario. St Lawrence Division Workshop. Location St. Emmanuel United Church, Smyth Road Info: [www3.sympatico.ca/gd.knowles/sld/sld\\_meets.htm](http://www3.sympatico.ca/gd.knowles/sld/sld_meets.htm)**

**May 29, 2010. Ottawa, Ontario. St Lawrence Division Meet. Location TBD Info: [www3.sympatico.ca/gd.knowles/sld/sld\\_meets.htm](http://www3.sympatico.ca/gd.knowles/sld/sld_meets.htm)**